



**Updated design proposals**  
May 2019

**Feasibility study for  
community-led housing**

Kindrochit Court, Braemar

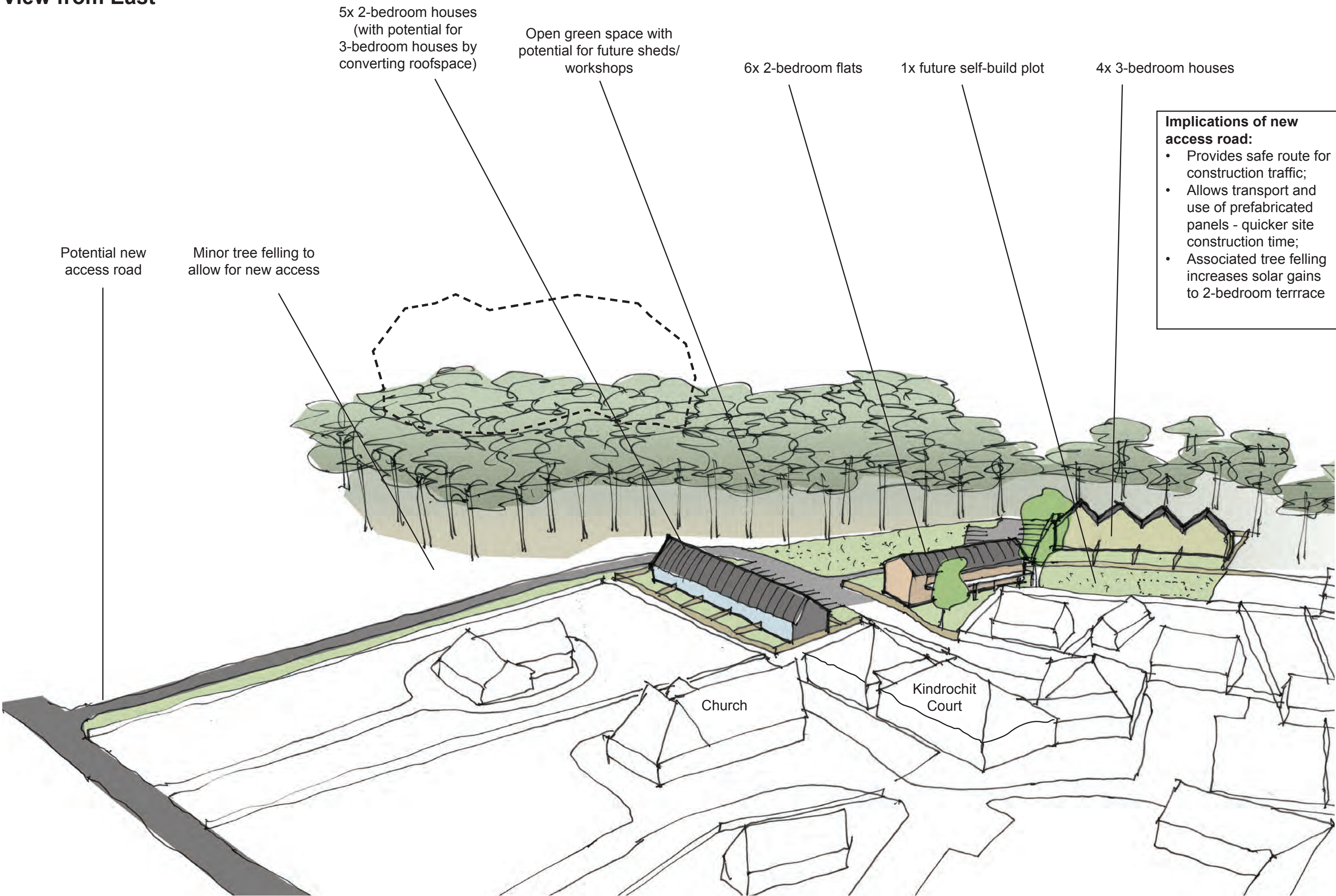
for Braemar Community Ltd



**SAM FOSTER**  
ARCHITECTS

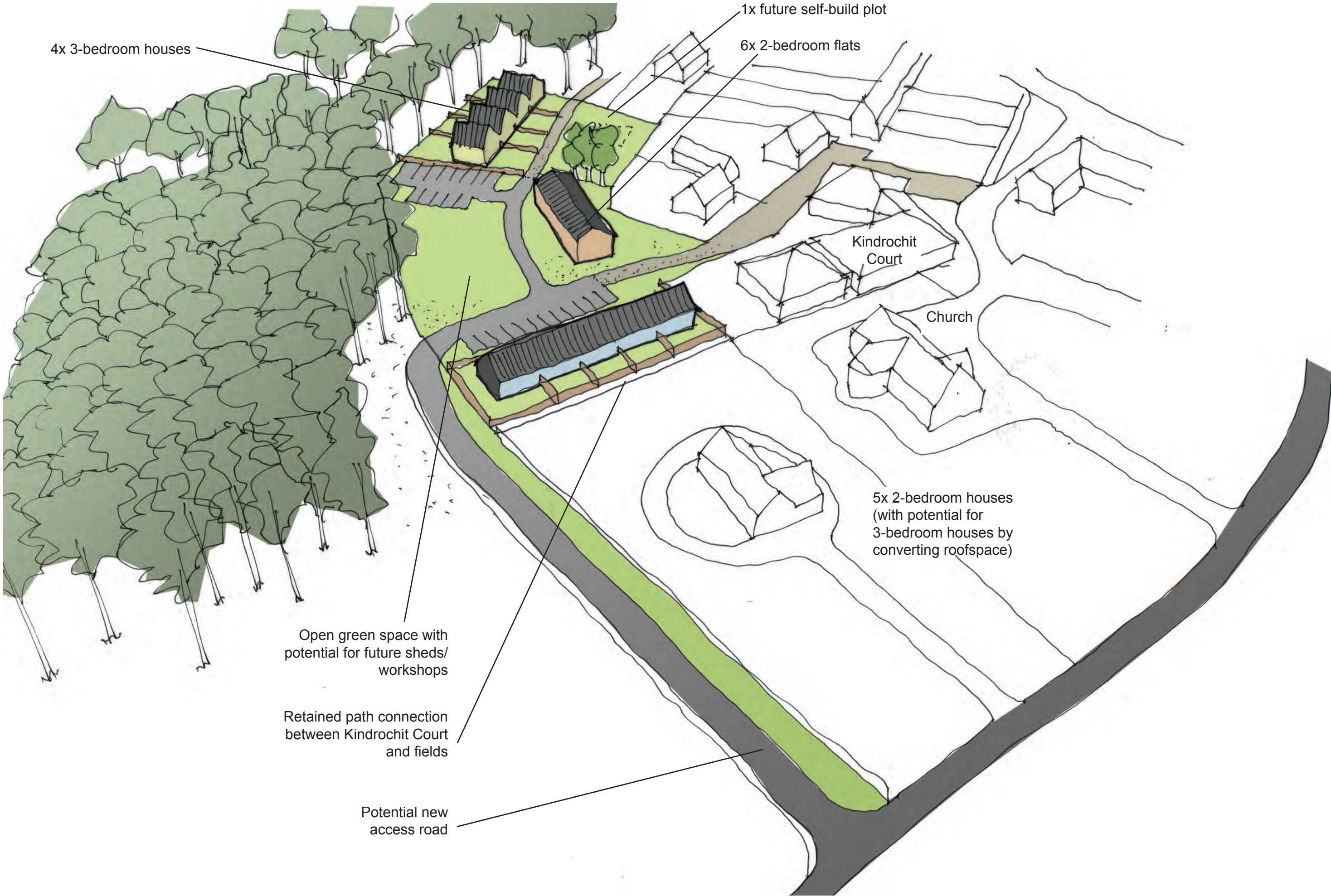


View from East



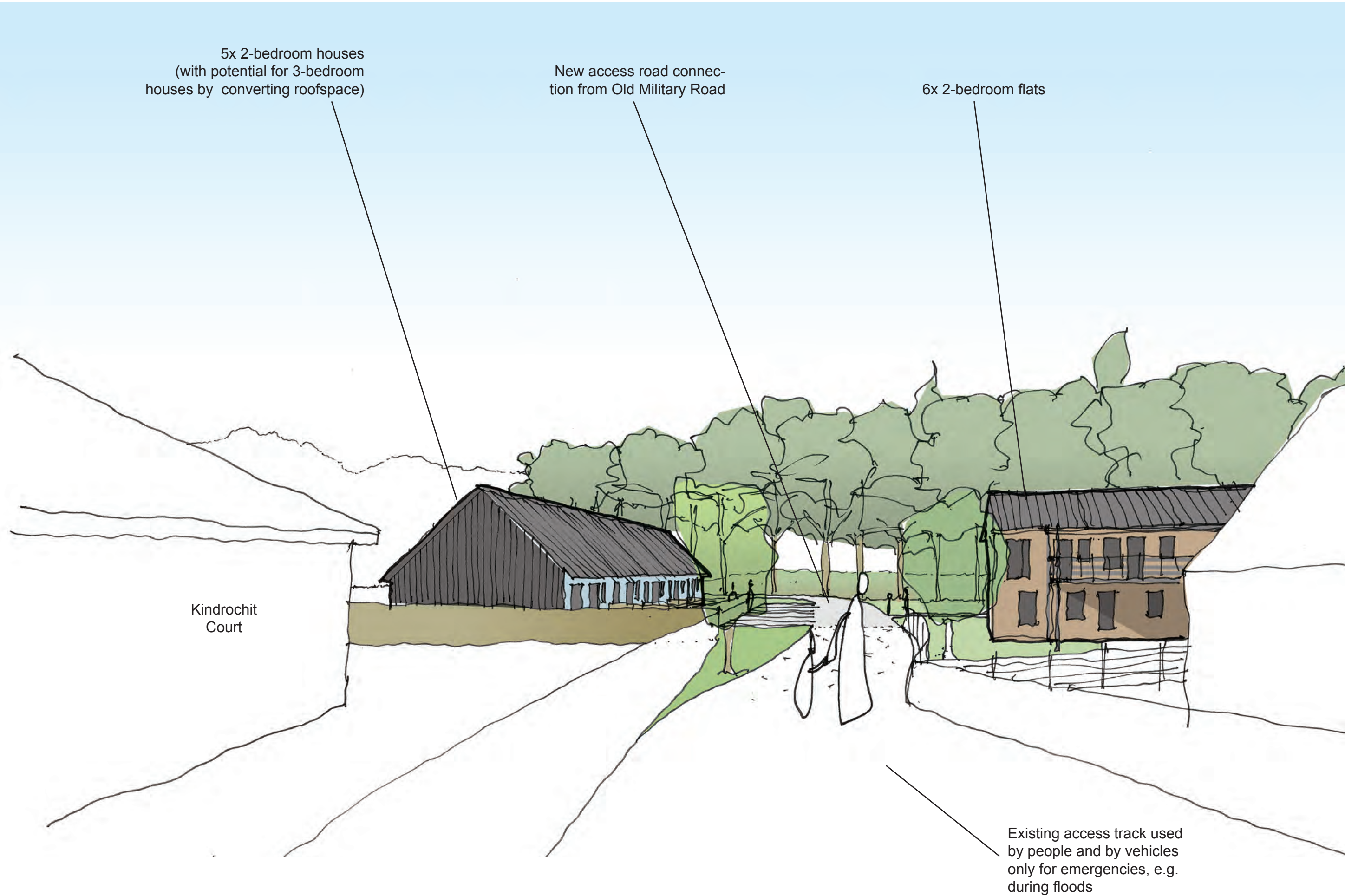


View from South



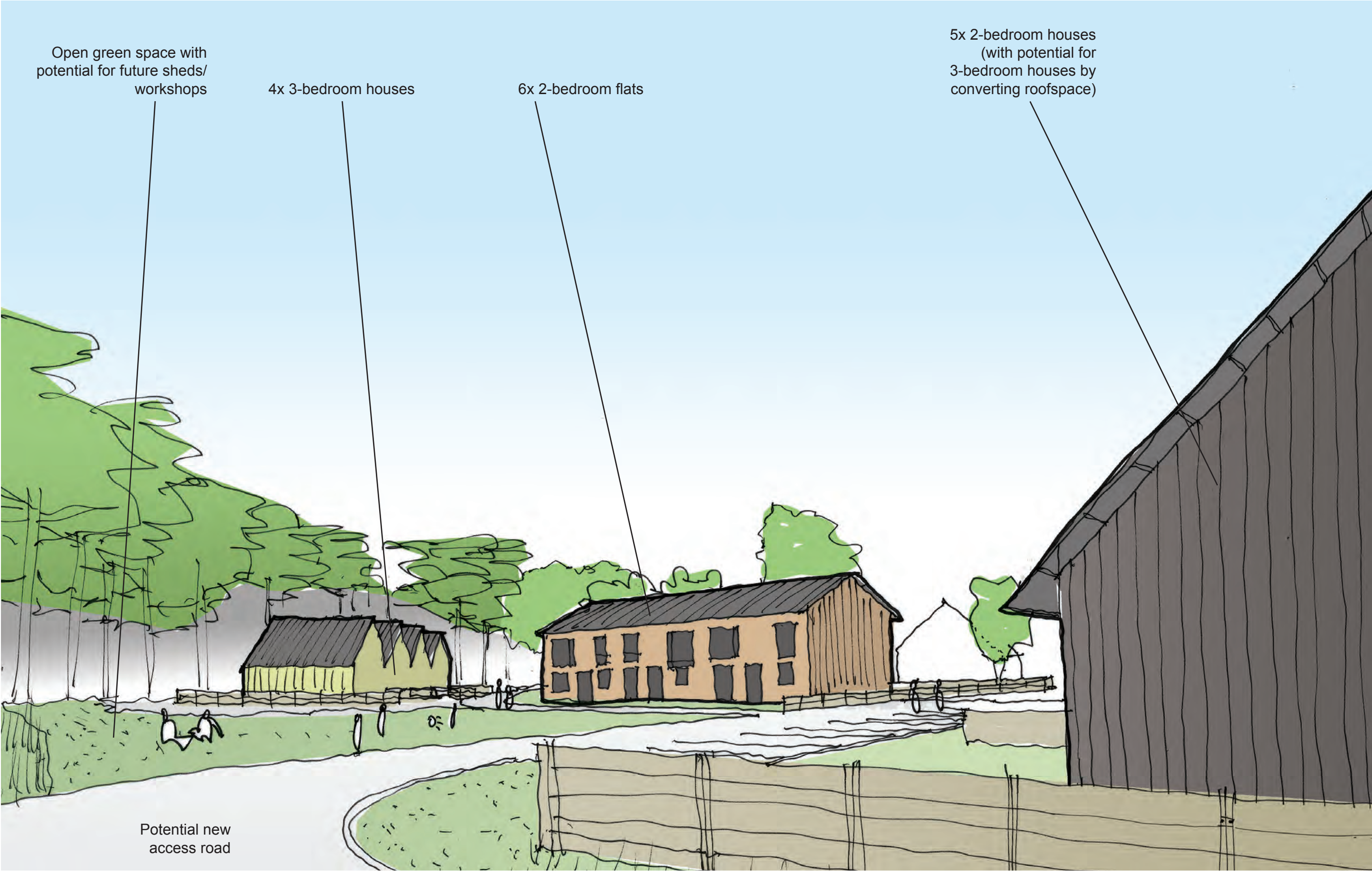


View from South





View from South





## Finishing materials



### Houses, flats and cottages

Untreated vertical larch cladding and coloured steel  
cladding to external walls;  
Black corrugated fibre cement / steel roof sheeting